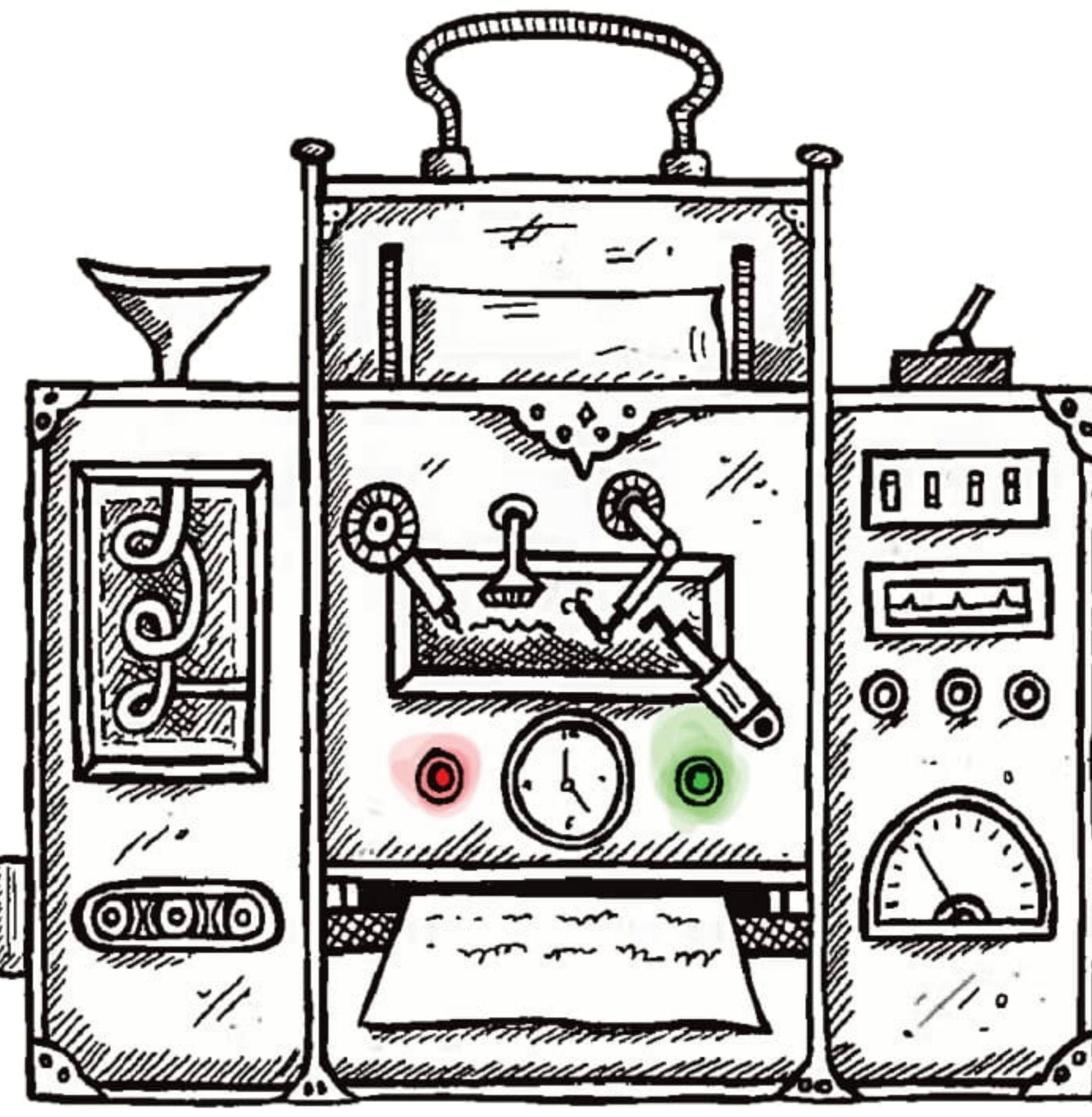
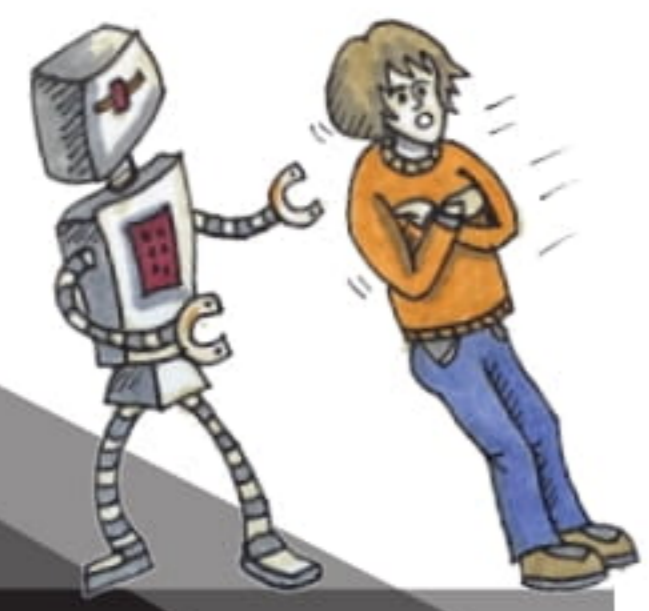
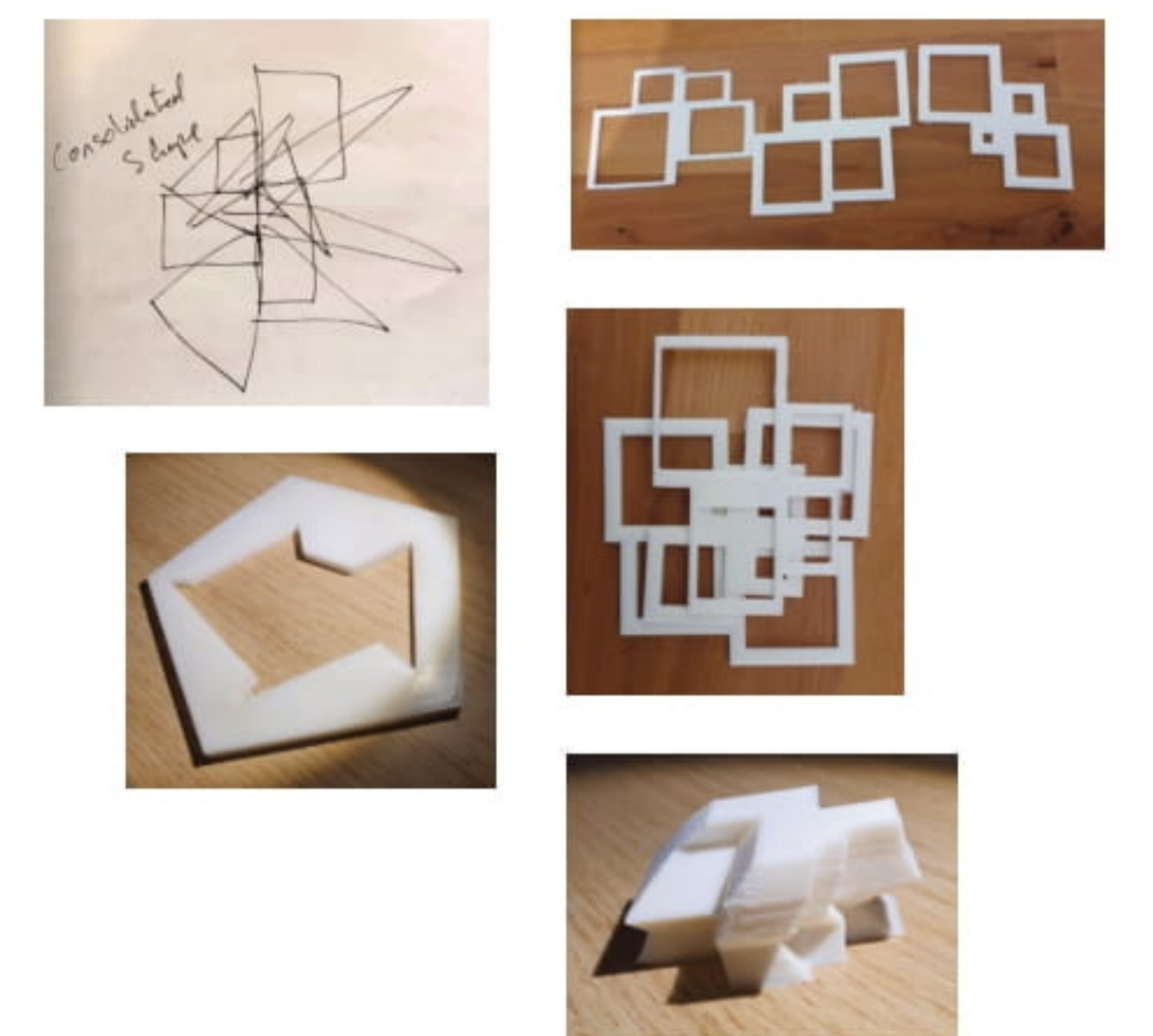


THE SHAPE OF TRUST

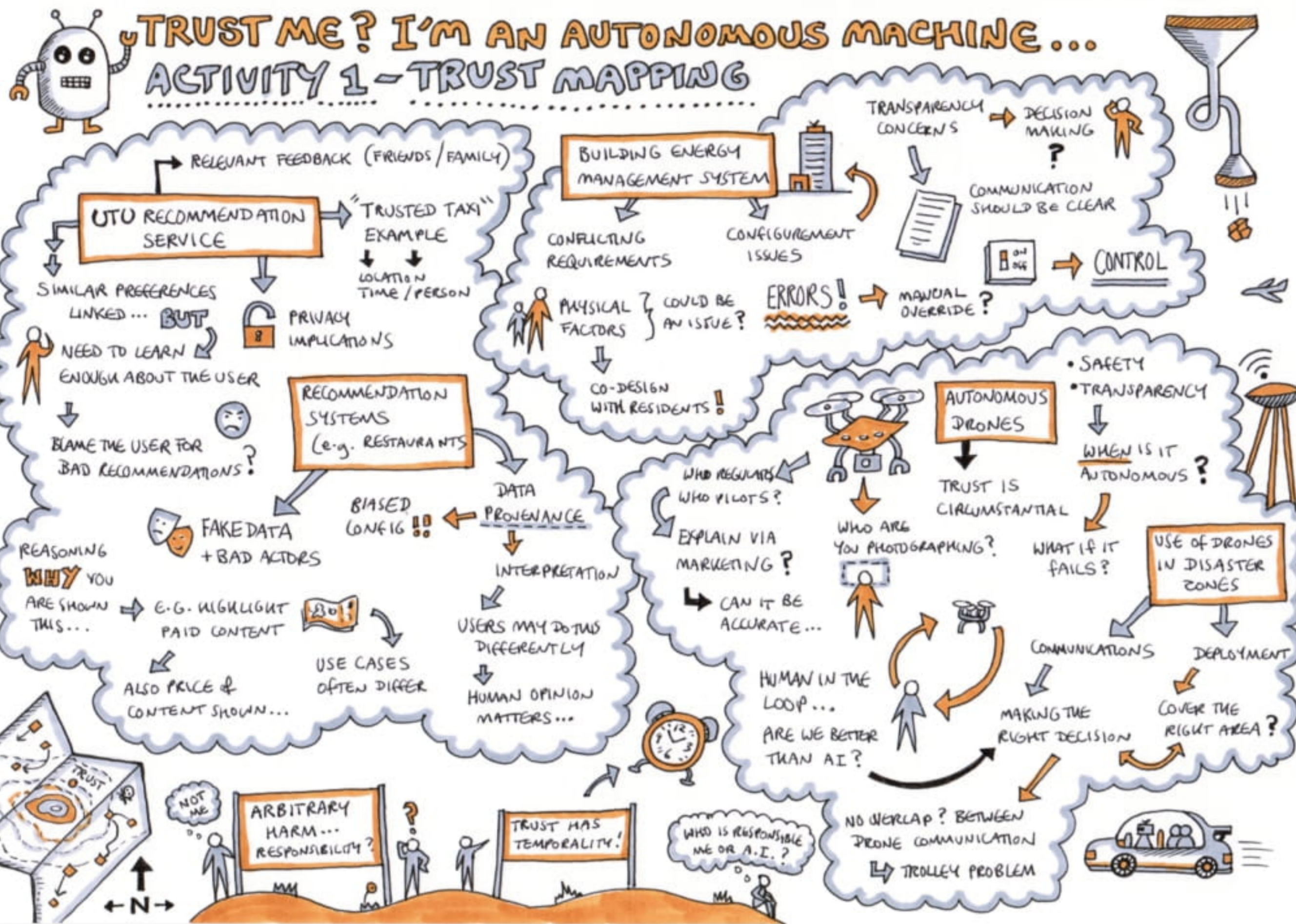
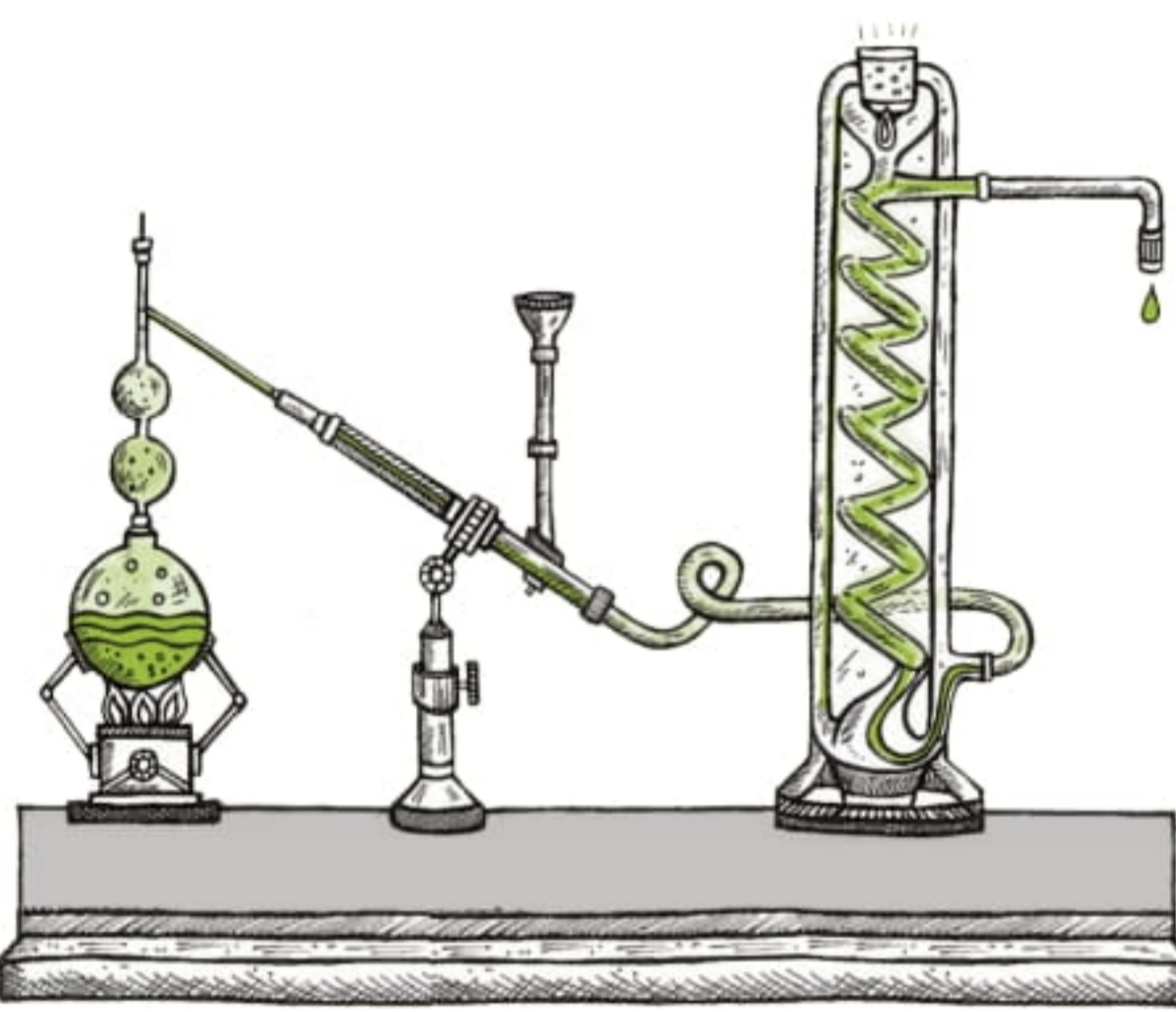


Through an iterative design process (see design iterations shown below) we created multiple prototypes exploring how to select key elements of Trust as a Distributed Concern, how to capture relative values for these, and how to display this information to users.

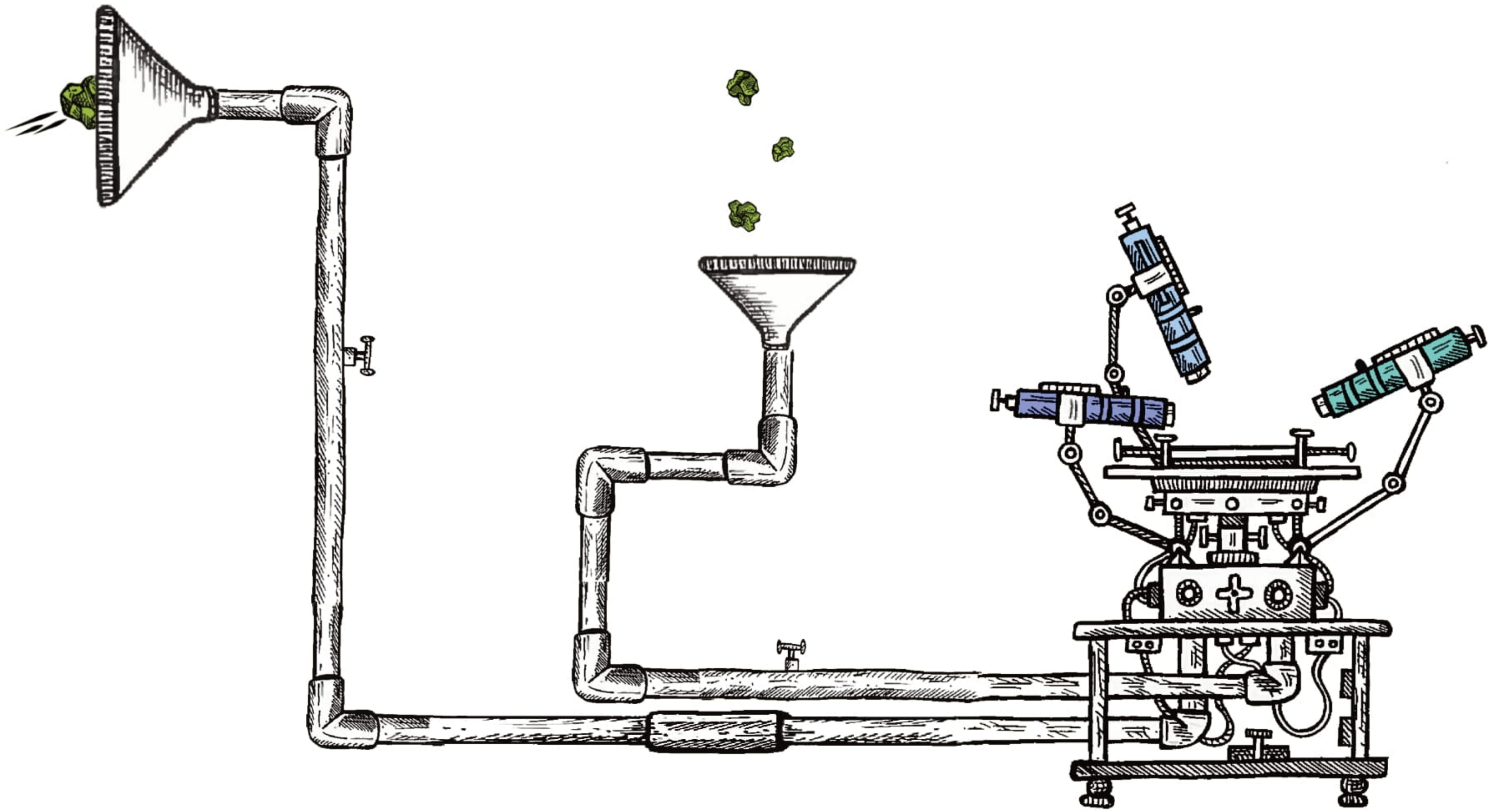
2. DESIGNING FOR DISTRIBUTED TRUST



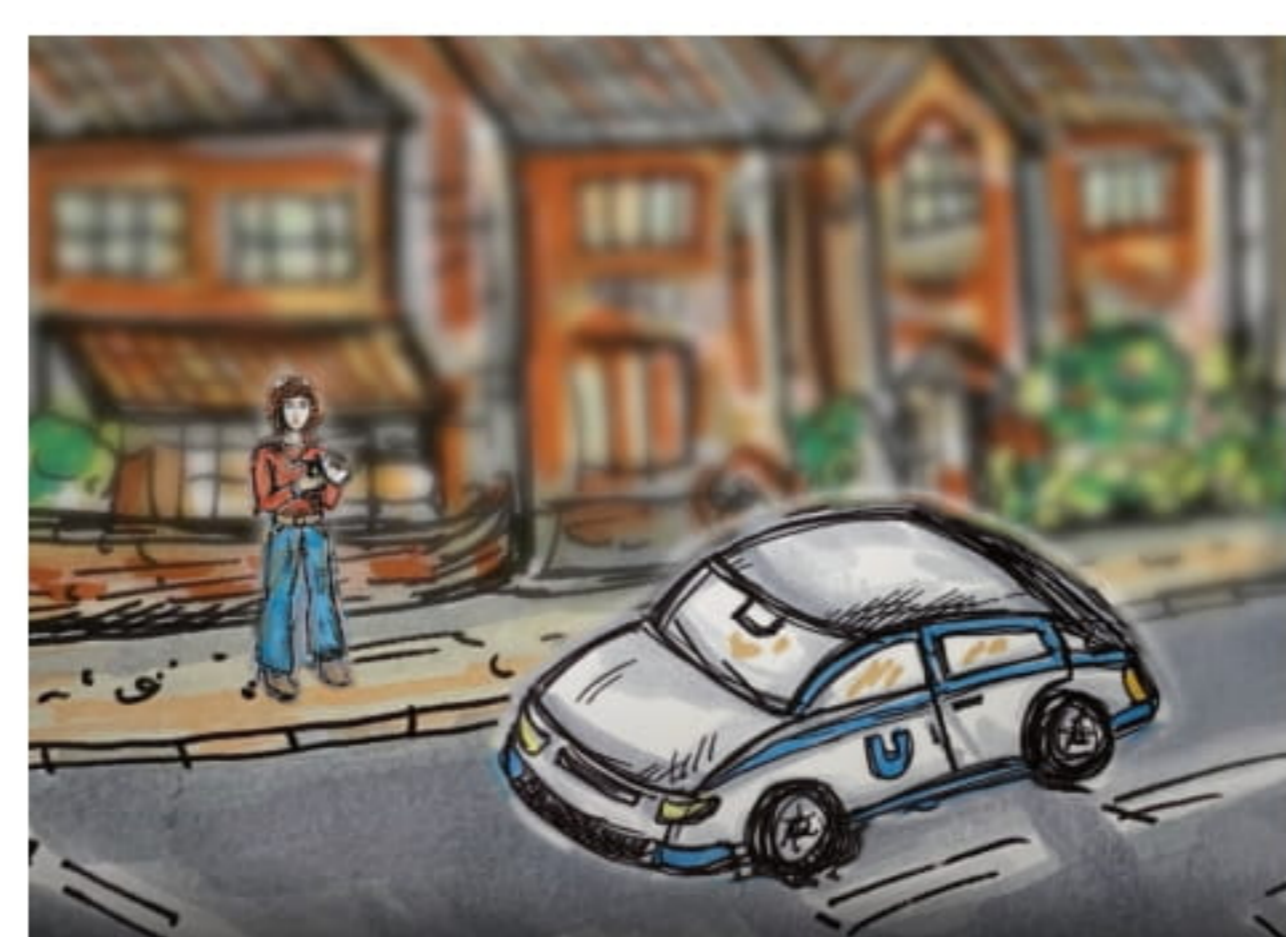
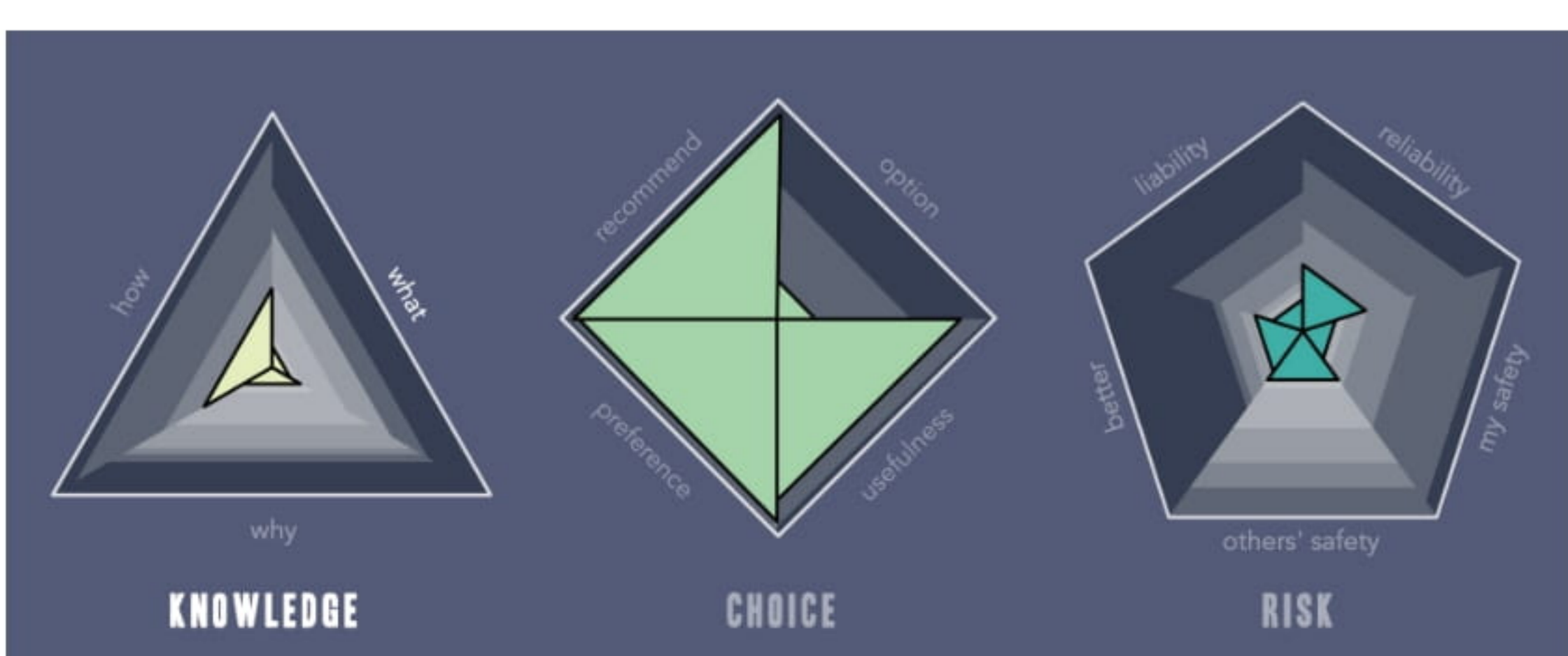
1. EXPERT WORKSHOP



This project is founded on an expert workshop (see visual sketch notes left) held with a range of academic and industry experts. This was used to map the landscape of research into Trust. Analysis of this data helped us develop the notion of 'Trust as a Distributed Concern'.



3. RESEARCH PROBE



We created an interactive research probe and engagement tool that uses an illustrated story about a journey in an autonomous taxi as a stimulus to elicit responses to varying situations from participants. The tool represents, captures, and displays dimensions of Trust distributed across various times, theories, and contexts. The tool results in each participants generating their unique shape of trust. A demo is available at the TAS All Hands Meeting, July 2022.